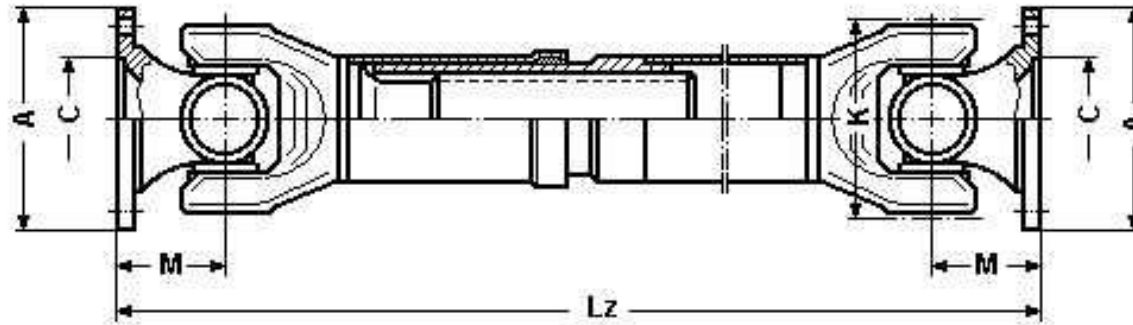


# Document à compléter afin de définir une TRANSMISSION COULISSANTE



Angle max. : .....

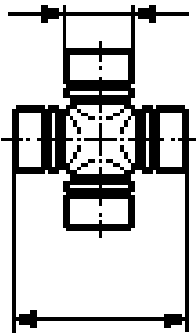
Lz (lg fermée) : .....

La (coulissement) : .....

- A - : .....
- C - : .....
- M - : .....
- B - : .....
- H - : .....
- K - : .....

Croisillon

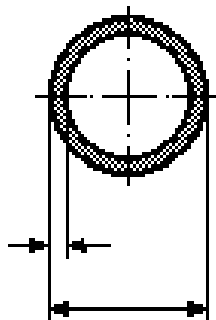
Ø:



Lg:

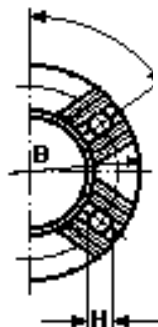
Tube

Epaisseur:

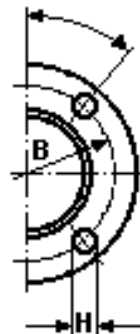


Øext :

Mâchoire à bride (sélectionner le type de bride)



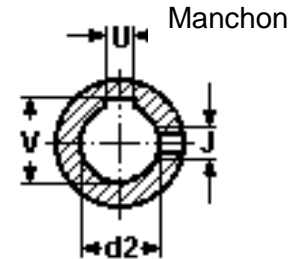
Denture



DIN



SAE



Manchon